

Brickhouse C.1

Tenor Drums

♩ = 112 Recorded opening

Measures 1-10 of the recorded opening. The notation is on a single staff with a 4/4 time signature. It features a series of eighth and sixteenth notes with accents. Drum notation below the staff includes 'R' for right hand, 'L' for left hand, and 'B' for bass drum. Measure 10 ends with a double bar line and repeat dots.

Measures 11-14. Measure 11 is marked with a box 'A'. Measures 12-14 feature sixteenth-note runs with '6' above them, indicating sixteenth-note groups. Drum notation includes 'R', 'L', and 'B'. Measure 14 ends with a double bar line and repeat dots.

Measures 15-18. Measure 15 is marked with a box 'B'. The notation consists of eighth notes with accents. Drum notation includes 'R', 'L', and 'B'. Measure 18 ends with a double bar line and repeat dots.

Measures 19-22. Measure 19 is marked with a box 'C'. Measures 19-20 feature sixteenth-note runs with '6' above them. Measures 21-22 feature eighth notes with accents. Drum notation includes 'R', 'L', and 'B'. Measure 22 ends with a double bar line and repeat dots.

Measures 23-26. Measures 23-24 feature sixteenth-note runs with '6' above them. Measures 25-26 feature eighth notes with accents. Drum notation includes 'R', 'L', and 'B'. Measure 26 ends with a double bar line and repeat dots.

Snare Vis.

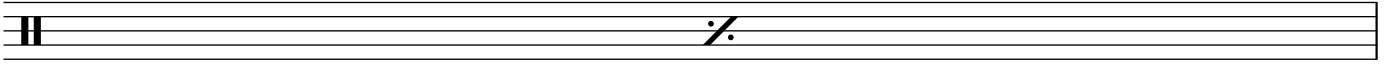
Measures 27-30. Measure 27 is marked with a box 'D'. The notation consists of eighth notes with accents. Drum notation includes 'R', 'L', and 'B'. Measure 30 ends with a double bar line and repeat dots.

Measures 31-34. Measures 31-32 feature eighth notes with accents. Measures 33-34 feature sixteenth-note runs with '5' above them, indicating sixteenth-note groups. Drum notation includes 'R', 'L', and 'B'. Measure 34 ends with a double bar line and repeat dots.

Tenor Drums

2

33



34

